

# HANSEN TIMBER SPC

## FLOORING INSTALLATION GUIDE

---



Our SPC floorings are constructed with the patented Uniclic® tongue and groove design that locks the planks together to form a tight and durable joint that limits moisture from passing through the seams.

SPC Flooring can be installed over most floor surfaces, and suitable for both residential and light commercial interior applications.

To assure satisfactory installation, please read all instructions before installing.

### TOOLS NEEDED

- Carpenter Square
- Utility Knife
- Tape Measure
- Pencil
- Long Straight Edge
- Chalk Line
- Safety Glasses
- Tapping Block
- Pull Bar

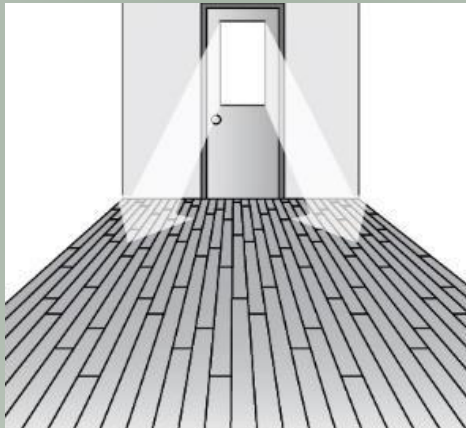


32 Eyres Road, Clevedon, Auckland 2585  
Website: [www.hansentimber.co.nz](http://www.hansentimber.co.nz) /  
[www.hansenflooring.co.nz](http://www.hansenflooring.co.nz)  
Ph: 09 242 3644

## Requirements & Site Conditions

- Make sure the sub-floor is flat, clean and dry. Any uneven areas greater than (3/16 inch in 10 feet) must be leveled with leveling compound.
- The installation area is guaranteed with a maximum length and width of 10m (32.8 feet). T-molding is required for larger area.
- Interior use only in a climate-controlled environment, not to be exposed to direct sunlight.
- Keep records of levelness and moisture testing.
- DO NOT use separate Pad for pre-attached vinyl planks.
- DO NOT install planks over floors that are sloped for drainage.
- Residential and light commercial applications.
- NOT for use on ramps.

**Installation direction:** It is recommended to install the length of the boards parallel to the main light direction.



## Prior to Installation

- Acclimate vinyl planks at least 48 hours to room temperature (60° - 85°F) and relative humidity between 30% - 55%.
- Use humidifier to maintain relative humidity if needed. Avoid installation under very dry/humid conditions, it is best to install when conditions are about the same as it will be most of the year.
- DO NOT stack higher than ten cartons and DO NOT stack anything on top of uninstalled vinyl planks. DO NOT store the cartons directly on concrete, allow for air circulation.
- Always carefully check flooring materials for any defects. Contact your supplier immediately if any defect is found.
- Open several cartons and mix planks together to ensure a natural pattern upon installation.
- Install all cabinets prior to installing flooring materials (DO NOT install on top of the floor).
- Remove all furniture from the room, as well as existing quarter round, baseboard molding or cove base.
- Inspect subfloor structure to be dry, clean, solid and flat. Any adhesive residue must be removed to ensure proper installation.
- Undercut doorway moldings to be the thickness of the flooring. Check that the doors can still open and close after the floor and underlayment are installed (minimum +1cm (3/8")).
- DO NOT install vinyl planks over soft subfloors (carpet) or areas prone to flooding.

**PRO TIP:** Purchase an additional 5% of flooring to allow for cuts and an additional 10% to 15% if installing diagonally. Excess flooring should be stored flat in a climate-controlled area for repairs in the event of future damage.



## SubFloor Requirements

### Concrete Subfloors:

Make sure moisture vapor emissions does not exceed 5 lbs./24 hour per 1,000 sq. when tested with the Anhydrous Calcium Chloride Test in accordance with ASTM F 1869 or 85% RH in accordance with ASTM F 2170 "Standard Test Method for Determining Relative Humidity in Concrete Slabs using in situ Probes. Level uneven areas - maximum deviation of 3mm over 3m. Holes and cracks in the cement must be patched, and expansion joints must be filled with a latex patching compound. Newly poured concrete floors must cure for a minimum of 90 days. Apply a 6 mils polyethylene moisture barrier before installation. Please note it is the person installing the floor and/or the homeowner's responsibility to ensure a smooth substrate and that any moisture or alkalinity issues are resolved prior to installing the floor. Once installed, it becomes the installer's responsibility.

### Wood Subfloors:

Must be solid and flat - maximum deviation of 3mm over 3m. Sand down high spots and fill low spots with leveling compound. Firmly fasten all loose boards and fill all gaps before installation. DO NOT install vinyl planks over wood floors/ laminate laid directly on concrete or bitumen.

### Mosaics/ Terrazzo/ Ceramics:

Must be solid and flat. Level grout lines with the width or depth of 3/16" (5mm).

### Textile floor covering (carpet):

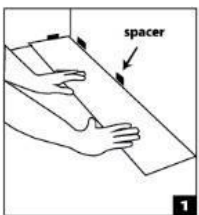
Must be removed.

### Radiant Heat Subfloors:

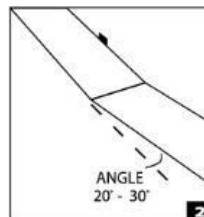
Rigid Core Planks can be installed over in-floor radiant heating systems provided the subfloor surface does not exceed 85°F (29.44°C) at any point. The initial floor temperature should not exceed 70°F (21.11°C) for 48 hours prior, during, and after installation. Thereafter the temperature should be gradually increased to the desired setting up to 85°F (29.44°C). Because heat does affect plastic more than wood, you may need additional room for expansion (larger expansion gap) and contraction (wider base to allow for contraction) Radiant heating systems that are installed directly on top of the subfloor surface are not recommended.

## Installing the SPC Flooring

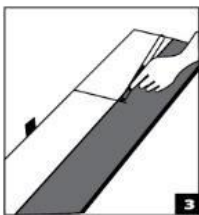
Begin installation parallel to the long dimension of the room, preferably parallel with the light sources (windows & doors). Snap a chalk line at the starting point to maintain alignment. Use planks mixed in from four or five cartons to achieve the ideal random pattern.



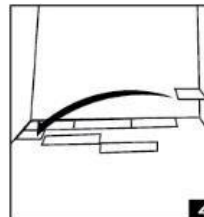
Start at the left corner. Place the 1<sup>st</sup> plank with the tongue facing wall. Use spacers to set a 12mm gap between wall and flooring.



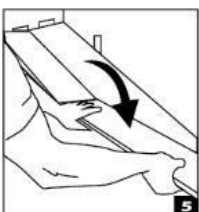
Install the 2<sup>nd</sup> plank by clicking the tongue into the groove, hold the plank from 30° angle and lower. Make sure both planks are perfectly aligned.



At the end of the 1<sup>st</sup> now, measure the last plank to leave 12mm space to the wall.



Begin the 2<sup>nd</sup> row with the leftover piece from the 1<sup>st</sup> row. The cut piece must be at least 30cm long.



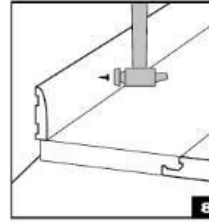
Click the short side and place it tight to the short end of the left plank. Angle the long side (about 30°) and top it firmly into the 1<sup>st</sup> row.



Measure the last row of floorboards (at least 5cm wide). Reduce the width of the 1<sup>st</sup> row if needed.



Use an adapted tapping block and mallet (NOT A HAMMER) to tap the plank under door frames. Ensure at least 11mm space under the door.



Remove spacers and sweep the floor a soft broom / brush. Cover the expansion gaps by driving baseboards into the wall (NOT into the floor).

**Pipe:** When fitting around door trim it will be necessary to slide the plank under the trim. This can be accomplished easily by starting the row on the side of the room with the door trim and then sliding the plank into place once it is attached. The row can be completed by inserting the tongue onto the groove or the groove under the tongue depending on the direction. A tapping block and pull bar can also be used to lock the joints together while the planks are in a flat position. Use a series of light taps until the joint is gradually locked together.

**Under doorframes:** When sawing the panels, ensure the expansion joint under the door at least 10mm. If you cannot lift the panel, use an adapted tapping block or pull bar and hammer to tap the panels together with the planks flat on the floor.

### After Care / Maintenance:

- Maintain room temperature between 15° - 29° C; relative humidity between 40% and 70%
- Avoid bringing dirt, water and sand indoors by providing a suitable floor mat at all outside doors. Sweep and/or dust mop the floor daily to remove surface dirt. Remember to clean walk-off mats regularly.
- Strong alkaline detergents or cleaning agents containing solvents should not be used. Remember always to rinse with clean water. Use a white pad on auto scrubber or 175 rpm machine.
- We recommend a diluted solution of Simple Green or another gentle cleaner for regular cleaning and removing grease and smudges from your floor.
- Do not use harsh abrasive cleaners, bleach, ammonia or vinegar-based cleaners, wax or acrylic polishes, or oil soaps. These may dull or damage the finish, leaving a greasy film and making the floor slippery and more difficult to clean.
- Protect your floor against direct sunlight or any intense source of artificial lighting. Over time, intense natural and artificial light may discolor the floors
- Do not roll, or drag heavy objects across your floor. Do not wear shoes having heel taps, spikes, cleats, rocks, gravel or sharp objects protruding from the sole.
- Protect furniture and chair legs with proper felt or rubber caps.
- Use (office) chairs and seats with soft rubber wheels that are suitable for a vinyl floor and/or use a suitable desk mat.

